

Hollywood Bowl Venue “Hot Spot” Area

Narrative: The Hollywood Bowl has worked with the PHPA for many years to educate the helicopter industry about the unique listening environment that is created by the canyon terrain that surrounds the Hollywood Bowl. It is this geologic attribute that creates the unique sounds that are so important to the patrons and orchestras that enjoy their experience at this classic venue.

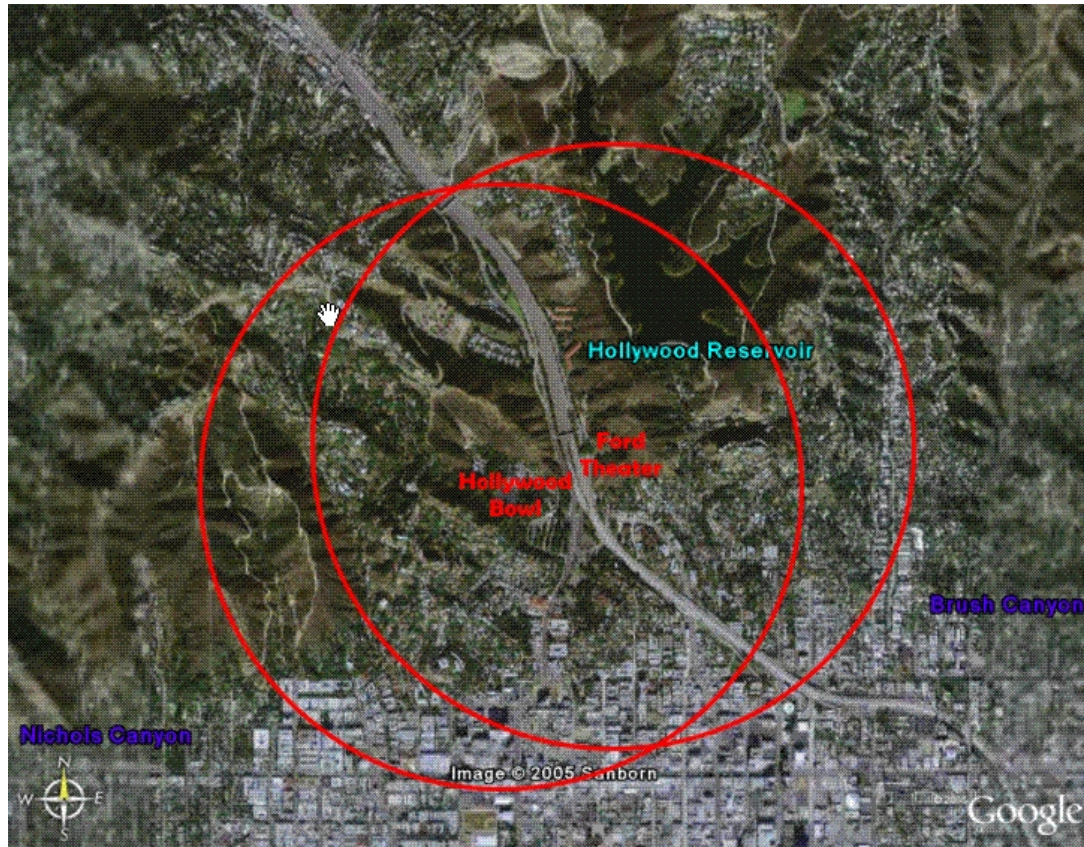
Unfortunately, these same geological features accentuate the normal subtle sounds of a transitioning helicopter. This situation is then compounded by the Hollywood Bowl's proximity to the “Hollywood Freeway Route” as depicted on the Los Angeles Helicopter Route Chart. Due to the high elevation of the terrain on either side of the route, helicopters transitioning the area fly very close, if not over, the Hollywood Bowl.

As a result of the cooperative efforts by both the PHPA and the administrative representatives of the Hollywood Bowl, a strobe light system has been implemented during all events at both the Hollywood Bowl and the adjacent Ford Theater to allow helicopter pilots to know when events are ongoing at these venues.

The PHPA recommends the following insights be used by pilots when their aircraft are conducting operations near these two venue “Hot Spots” (when the strobe light are on):

1. All traffic transitioning North/South bound should transition the foothills either East of Mt. Lee or West of the KJOY Tower, when safety and other operational concerns permits.
2. All traffic transitioning East/West bound should transition south of Sunset Blvd. when their operations do not need to transition the foothills and safety permits.
3. All operations should be conducted in accordance with the “Fly Neighborly” program as published by the Helicopter Association International.

Pictorial:



Venue “Hot Spots”

