

# LAX Industrial Transition Community “Hot Spot” Areas

Narrative: The FAA issued NOTAM FDC 2/1776 to redraw the “Sepulveda Industrial Transition Route” as depicted on the Los Angeles Helicopter Route Chart. This NOTAM was the result of efforts spearheaded by the Southern California Airspace Users Group. The NOTAM became permanent in December 2004 with the publishing of the updated Los Angeles Helicopter Route Chart in that month.

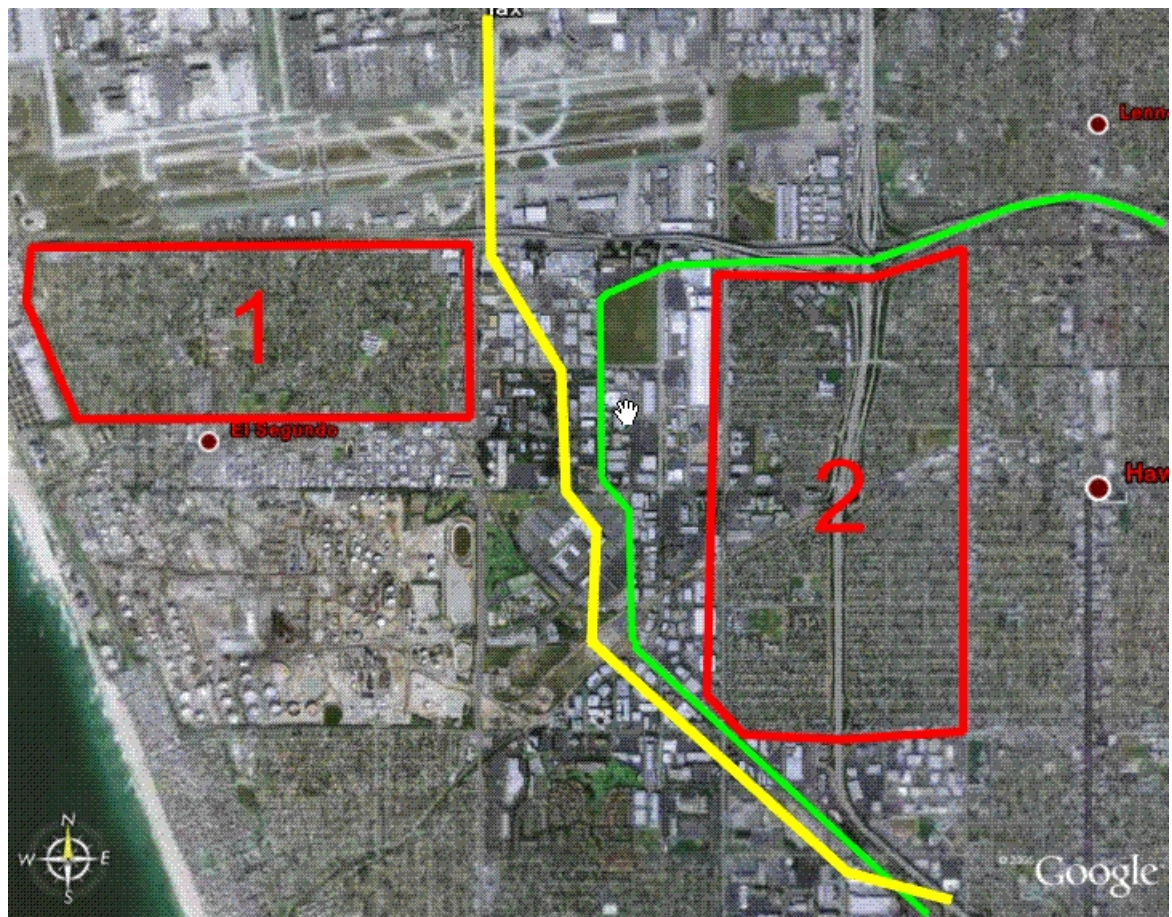
Deviations from this route has resulted in an increase in community noise complaints from two neighborhoods located East and West of this transition route. The most northerly neighborhood in the City of El Segundo (“1” shown below) and the Holly Glen neighborhood in the City of Hawthorne (“2” shown below).

The PHPA recommends that all aircraft, when safety permits, follow the text of the route description from the NOTAM (shown below) to avoid overflight of these communities.

SOUTHBOUND: CROSSING 105 FREEWAY AT 1500 FT MSL, OFFSET EAST TO JOIN THE MTA GREEN LINE WEST SIDE OF THE TRACKS. DESCEND ALONG THE WEST SIDE OF GREEN LINE TO AT OR ABOVE 900 FT MSL. ONCE PASSING THE REDONDO BEACH BOULEVARD GREEN LINE STATION, OFFSET TO JOIN THE 405 FREEWAY SOUTHBOUND.

NORTHBOUND: ABEAM THE MTA GREEN LINE STATION AT REDONDO BEACH BOULEVARD AT OR ABOVE 900 FT MSL, OFFSET WEST OF THE TRACKS AND FOLLOW THE GREEN LINE WHILE CLIMBING TO 1500 FT MSL. PRIOR TO REACHING THE 105 FREEWAY, OFFSET WEST TO JOIN SEPULVEDA BOULEVARD.

## Pictorial:



Green Line  Sepulveda Industrial Route  Community “Hot Spots” 