

Van Nuys Airport Community “Hot Spot” Areas

NARRATIVE

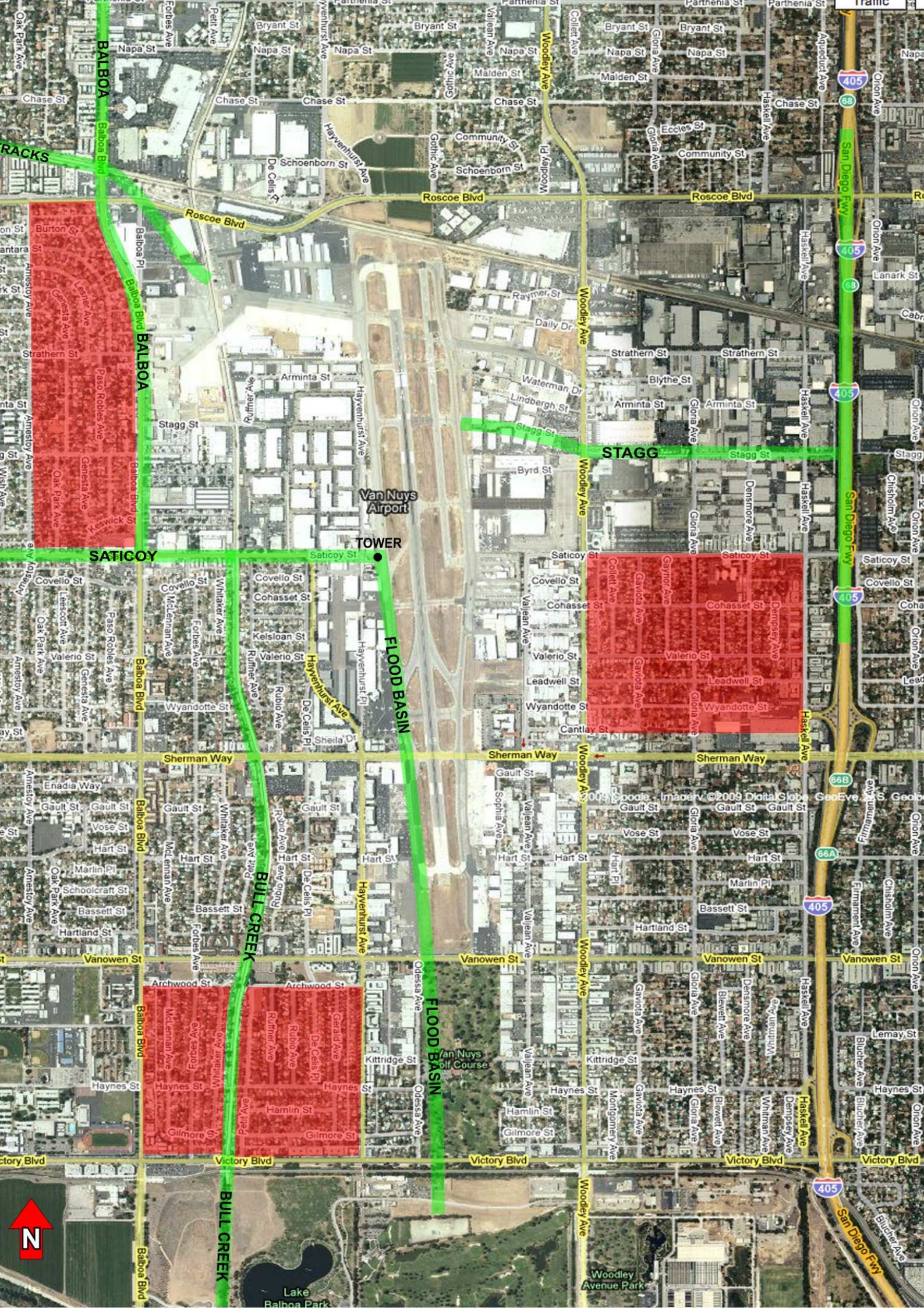
The Citizens Advisory Committee of Van Nuys (CAC) contacted LAWA (Los Angeles World Airports) / Van Nuys Airport to address concerns relating to an increase in helicopter noise complaints from citizens within their community. CommuniQuest, a mediation consulting firm, was contracted to LAWA to assist with the communication process.

The **PHPA** was invited to participate along with representatives of helicopter operators on the airport property, which included “electronic newsgathering” (ENG), law eEnforcement, flight training, firefighting and maintenance as well as representation from ATCT Operations.

After a concentrated discussion focusing on local airspace configuration and the FAA regulations pertinent to helicopter operations, many of the concerns brought forth by the CAC were addressed by those in attendance and mitigated. The CAC understands that commercial helicopter operators perform many vital services and it is their desire to work with our industry members to mitigate as much residual noise from their neighborhoods when possible.

The PHPA recommends the following insights be used by pilots when their aircraft are conducting operations near these Van Nuys Airport “Hot Spots” as identified by **RED** shaded areas in pictorial:

1. All aircraft should follow geographic curvature of Helicopter Routes indicated by **GREEN** shading until reaching airport property.
2. All aircraft providing services to media clients near these “Hot Spots” should minimize their time over specific geographic targets, when safety and circumstances permit, and follow the guidelines of the “Fly Neighborly” program as recommended by the Helicopter Association International.
3. All aircraft should maintain FAA / Airport regulations for arrival and departure as stated which are: “Departures will climb to 1,300 MSL prior to departing airport property, and arrivals will maintain 1,300 MSL until reaching airport property.”



BALBOA

RACKS

BALBOA

SATICOY

BALBOA

BALBOA

BALBOA

BALBOA

BULL CREEK

Roscoe Blvd

Roscoe Blvd

Saticoy St

Sherman Way

Sherman Way

Vanowen St

Victory Blvd

Victory Blvd

Hayvenhurst Ave

Hayvenhurst Ave

Hayvenhurst Ave

Hayvenhurst Ave

Hayvenhurst Ave

Hayvenhurst Ave

Hayvenhurst Ave

Hayvenhurst Ave

Woodley Ave

Woodley Ave

Woodley Ave

Woodley Ave

Woodley Ave

Woodley Ave

Woodley Ave

Woodley Ave

Stagg St

Stagg St

Stagg St

Stagg St

Stagg St

Stagg St

Stagg St

Stagg St

Stagg St

Stagg St

Stagg St

Stagg St

Stagg St

Stagg St

Stagg St

Stagg St

Stagg St

Stagg St

Stagg St

Stagg St

Stagg St

Stagg St

Stagg St

Stagg St

Stagg St

Stagg St

Stagg St

Stagg St

Stagg St

Stagg St

Stagg St

Stagg St

Stagg St

Stagg St

Stagg St

Stagg St

Stagg St

Stagg St

Stagg St

Stagg St

Van Nuys Airport

TOWER

FLOOD BASIN

FLOOD BASIN

